



JF Series

JF-1MD / JF-2MED

Reliable Security
Simple Functionality
Sophisticated Design

Living With *Comfort*

Home is where your loved ones live and where you feel relaxed.

Aiphone is the choice to make you and your family feel secure.

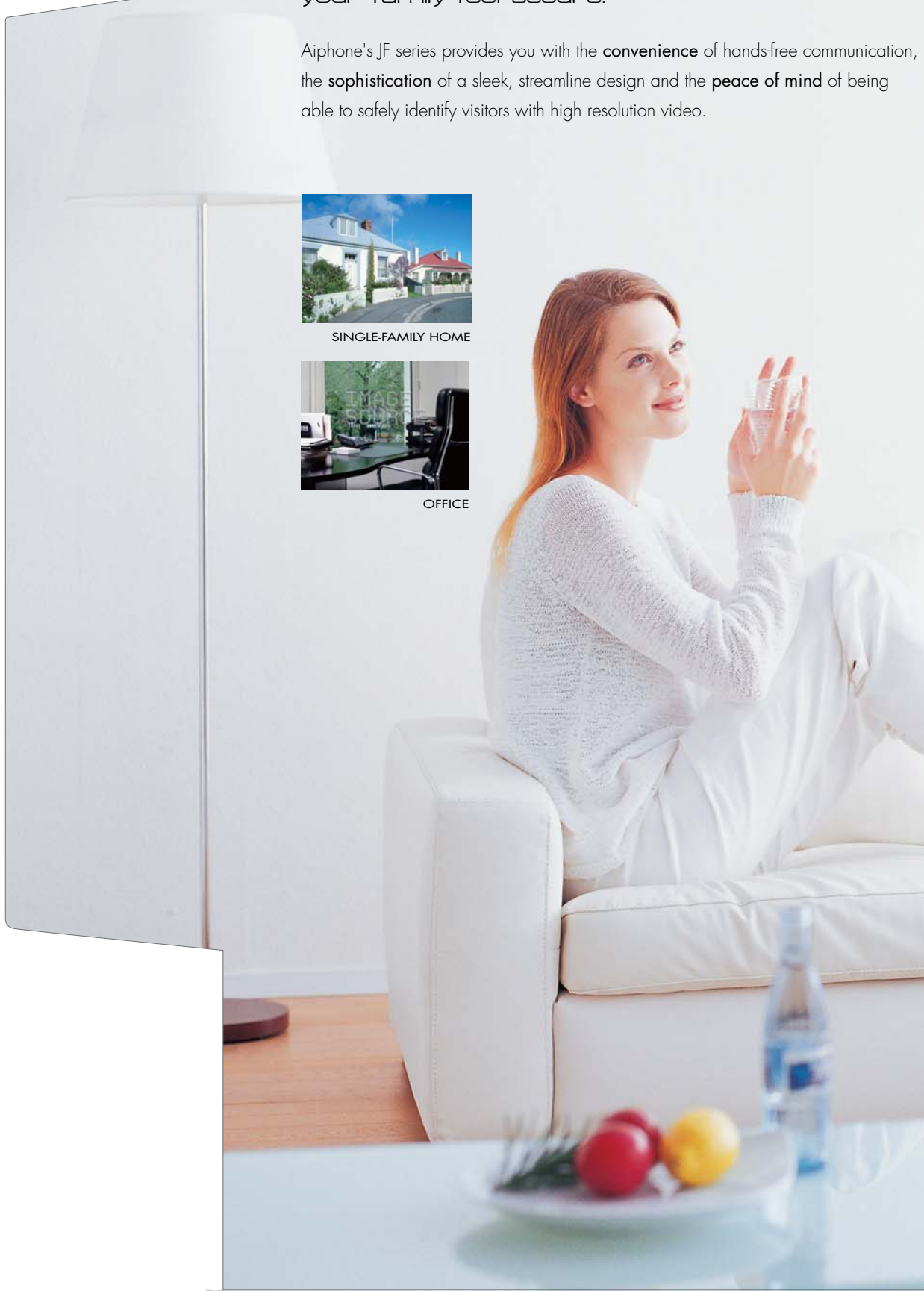
Aiphone's JF series provides you with the **convenience** of hands-free communication, the **sophistication** of a sleek, streamline design and the **peace of mind** of being able to safely identify visitors with high resolution video.



SINGLE-FAMILY HOME



OFFICE



AIPHONE

Hands-free
Color Video Intercom
JF series

Choose from 2 systems: Basic System (JF-1MD), or Enhanced System (JF-2MED) with additional features of PICTURE MEMORY, VOICE MEMO, and MESSAGE FOR ENTRANCE.



JF-1MD



JF-2MED

Picture Memory
Voice Memo
Message for Entrance



JF-DV



JF-DVF



JF-DA



Sophisticated color monitor provides security.



The JF series is the high performance, hands-free video intercom with a quality monitor and an amazingly slim design. It is easy to operate and requires a little time to install. The JF series offers a simple yet effective security solution.

Basic System (JF-1MD) & Enhanced System (JF-2MED) Common Features

- **Clear identification provided day and night!**

The Video Door Station automatically activates the built-in white LED illuminator in low light condition, and sends the clear color image to 3.5 inches TFT color LCD monitor. Color identification is always available even at night!



- **Both hands-free & press-to-talk communications are available.**

When a call comes in, press the TALK button to begin a hands-free conversation. In a noisy environment, Press-to-talk mode provides a clear conversation.



- **Transmit LED shows you the condition.**

Transmit LED lights when you talk, and goes off as you listen to a caller (or hear outside sounds).



- **3 types of Video Door Station are available.**

If you desire a Vandal Resistant Video Door Station, choose either the JF-DV or JF-DVF.



JF-DV
Vandal - Resistant,
Surface mount,
Zinc die-casting,
Weather resistant

JF-DVF
Vandal - Resistant,
Flush mount,
Stainless steel,
Weather resistant

JF-DA
Surface mount,
Plastic,
Weather resistant

*JF series Video Door Stations are compatible with JB series Inside Stations.

- **Entrance monitoring**

Enables you to monitor the area around the Door Station. Inside sound is not sent to the Door Station.

- **Option button**

Controls external device connected with optional connector, such as an entrance door light.

Not available for JF-1SD & JF-2SD.



Basic System

JF-1MD

Supports 1 Door Station and 1 or 2 Inside Stations.

Provides a simple security solution with basic features.



The basic system offers a simple security solution. It supports 1 Door Station and 1 or 2 Inside Stations (1 Master Station + 1 Sub Station). The Color Video Inside Station is only 27mm thick!



Kit Boxes

- **JFS-1AD :**
JF-1MD, JF-DA & power supply
- **JFS-1ADV :**
JF-1MD, JF-DV & power supply
- **JFS-1ADF :**
JF-1MD, JF-DVF & power supply



DOOR STATION



COLOR VIDEO
JF-DV

or



COLOR VIDEO
JF-DVF



COLOR VIDEO
JF-DA

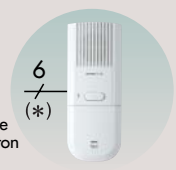
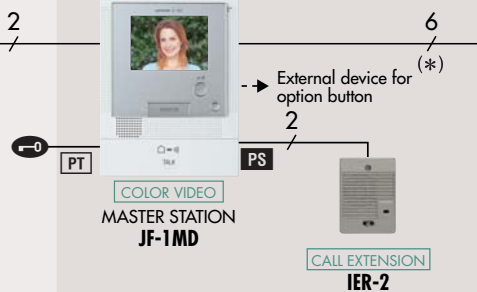
INSIDE STATION



COLOR VIDEO
MASTER STATION
JF-1MD



COLOR VIDEO
SUB STATION
JF-1FD



AUDIO
SUB STATION
JF-1SD

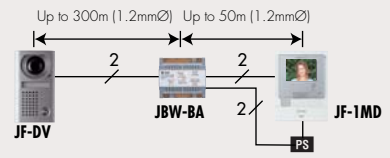
(*) Room-to-room communication is not available.

JBW-BA Long distance adaptor

- Extends wiring distance to video monitors from 100m up to 350m.



Use specified cable for JBW-BA.
• 1.0mm Ø to 1.2mm Ø
• Insulation: PE (polyethylene) (never PVC)



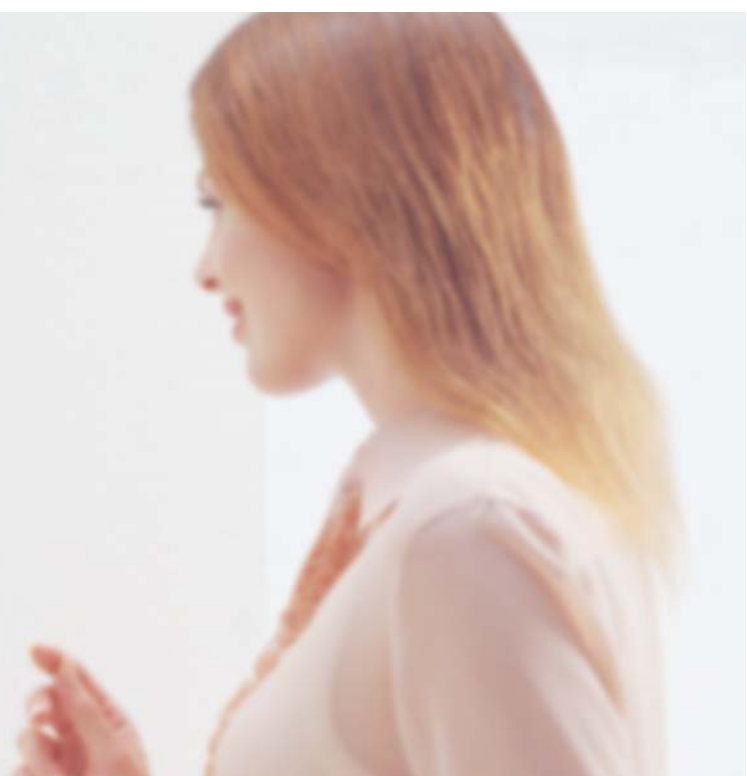
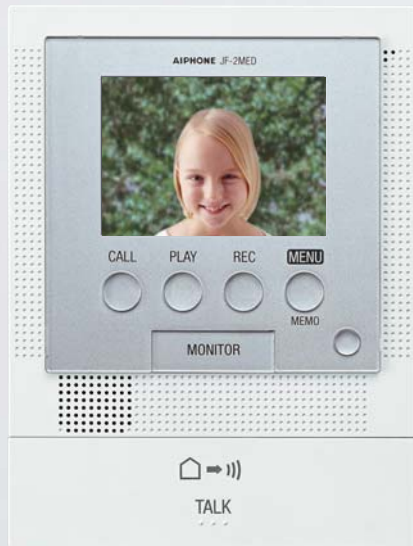
PS : Power supply PS-1820DIN, PS-1820S, PS1820UL, PS-1820, PS-1810DIN PT : AC transformer



Enhanced System JF-2MED

Supports up to **2 Door Stations** and **3 Inside Stations**.

Provides additional features for greater security and better communication.



Picture Memory

Voice Memo

Message for Entrance

Only 32mm



The enhanced system supports up to 2 Door Stations and 3 Inside Stations with the addition of these features: Picture Memory to record visitors, Voice Memo to leave messages at the inside monitor and Message for Entrance to record a message for visitors when speaking to them is not appropriate. All these features in a monitor that's only 32mm thick!

Picture Memory is available both manually & automatically.

If a call is received from Video Door Station, the unit starts recording automatically. You can also start recording by pressing the REC button manually.



Up to 50 pictures
(maximum length of approx.
8 seconds (8 shots) / picture)
can be recorded.
10 pictures can be saved so that
it will not be overwritten.

8 shots / picture



Record

• Automatic Recording

Works anytime - even when you're away.



Starts recording when the CALL button on the Video Door Station is pressed.

• Manual Recording

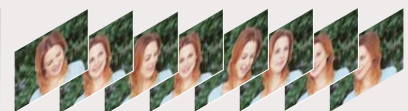
Whenever you like!



Starts recording by pressing the REC button when monitoring or talking to the visitor.

Play

- Plays 8 shots continuously so that you can see them as a moving image. Pausing and frame-by-frame playing are also available.



Both the manual recording of visitors and the playback of recorded images can be controlled on Master and Sub Inside Stations.

CAMERA POSITION & IMAGE VIEW AREA

The camera angle can be adjusted to 3 levels (JF-DA only)

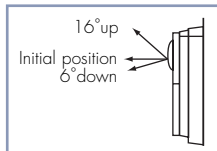
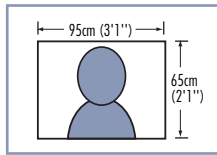
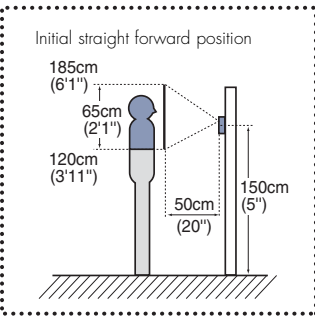


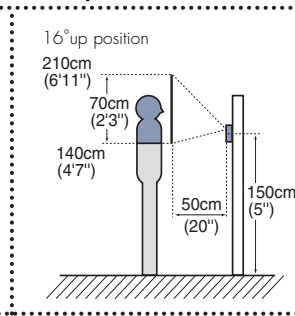
Image view area (JF-DV, JF-DVF, JF-DA)



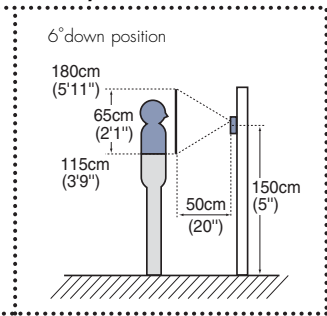
JF-DV, JF-DA, JF-DVF



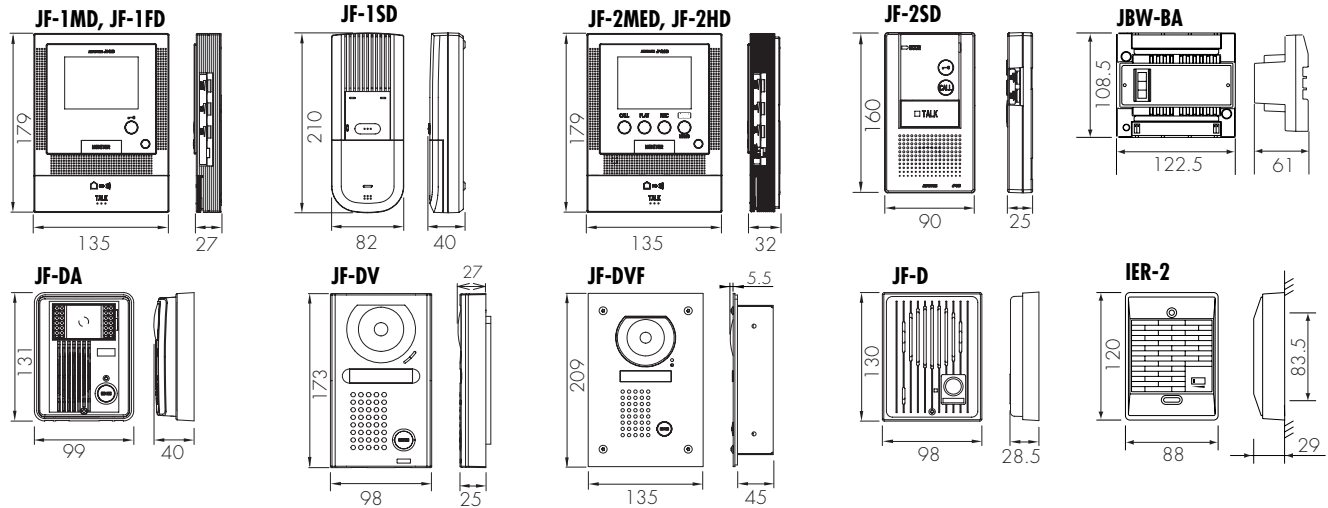
JF-DA only



JF-DA only



UNIT DIMENSIONS



SPECIFICATIONS

JF-1MD

Power	: 18V DC - Use PS-1820DIN, PS-1820S, PS-1820, PS-1810DIN
Calling	: Chime, image and audio approx. 45 sec.
Communication	: Approx. 1 min. : AUTOMATIC (hands-free) - to activate, momentarily press TALK button : MANUAL (press-to-talk/release-to-listen) to activate, press TALK button for 1 sec. or more
Video Monitor	: 3-1/2" direct view TFT color LCD
Scanning Line	: 525 lines
Minimum Illumination	: 5 Lux at 30cm distance
Night Viewing	: Up to 30cm from camera, with white LED projected, background beyond 30cm cannot be seen
Door Release Contact	: 24V AC/DC, 500mA (N/O dry closure contact)
Option Output	: 24V AC/DC, 1.6A (dry closure contact)
Wiring	: Door to master: 2-cond., mid cap, solid, non-shielded Master to sub: 6-cond., mid cap, solid, non-shielded
Distance	: Master/Sub to door: 50m (Ø0.65mm) 100m (Ø1.0mm) Master to IER-2: 75m (Ø0.65mm) 150m (Ø1.0mm)

JF-2MED

Power	: 18V DC - Use PS-1820DIN, PS-1820S, PS-1820, PS-1810DIN
Calling	: Chime, image and audio approx. 45 sec.
Communication	: Approx. 1 min. : AUTOMATIC (hands-free) - to activate, momentarily press TALK button : MANUAL (press-to-talk/release-to-listen) to activate, press TALK button for 1 sec. or more
Video Monitor	: 3-1/2" direct view TFT color LCD
Scanning Line	: 525 lines
Minimum Illumination	: 5 Lux at 30cm distance
Night Viewing	: Up to 30cm from camera, with white LED projected, background beyond 30cm cannot be seen
Door Release Contact	: 24V AC/DC, 500mA (N/O dry closure contact)
Option Output	: 24V AC/DC, 1.6A (dry closure contact)
External Sensor Input	: N/O dry closure contact
Wiring	: Door to master: 2-cond., mid cap, solid, non-shielded Master to sub: 4-cond., mid cap, solid, non-shielded
Distance	: Master to door: 50m (Ø0.65mm) 100m (Ø1.0mm) Master to farthest sub: 50m (Ø0.65mm) 100m (Ø1.0mm) Master to IER-2: 75m (Ø0.65mm) 150m (Ø1.0mm)

WIRING & CABLE

Two-conductors Monitor to Door Wiring

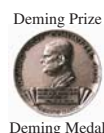
JF-1MD: Six-conductors Master to Sub Wiring, JF-2MED: Four-conductors Monitor to Monitor Wiring

Recommend: Parallel or jacketed 2-conductor, mid-capacitance non-shielded cable. PVC jacket with PE (polyethylene) insulated conductor. Never use individual conductors, twisted pair cable or coaxial cable.

Hands-free communication is activated by automatic voice switching circuitry, which may cause intermittent audio by the environmental noise level of either inside stations.

The image on the monitor is simulated.

Distributed by :



AIPHONE[®]
Providing Peace of Mind

<http://www.aiphone.com/>

Printed in Japan (E)
MC49004AOZ

JF(E)0906A

All rights reserved. All statements valid at time of printing. The design and specifications are subject to change without notice for improvement.