



## DP2200/P PANEL MOUNT DualPROX® PROXIMITY READER

## PRODUCT DESCRIPTION

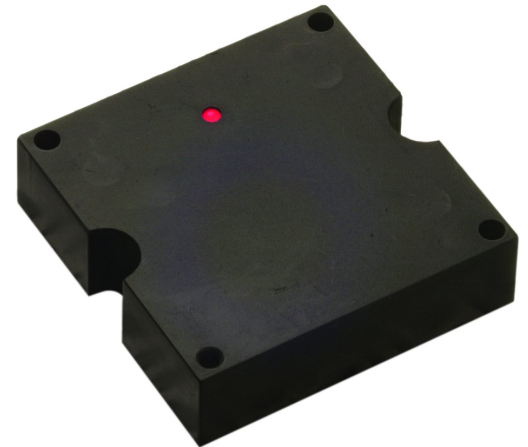
The DualPROX® reader designed by JTI Technologies reads both old PAC and new 125kHz type cards and tokens. It provides two simultaneous data outputs, one for connection to PAC controllers, and the other a selectable 26-bit or 44-bit Wiegand data output.

The Wiegand data output format can be connected to most access control systems. The PAC serial output can be connected directly to PAC 1000, PAC 1100, PAC 2000 and PAC 2100 controllers. It will simulate a PAC reader and can be connected to the controller's reader port without an interface. Token and card codes are the same as from a PAC reader.

The DualPROX® allows installers and system integrators to easily integrate with many different types of host system controllers for which they only need to stock one type of reader regardless of the system they intend to use it with.

End users can use the DualPROX® reader on existing PAC systems and it also provides the option of migrating to other manufacturers' access control systems without the need to change readers or tokens.

The panel mount reader is suitable for fitting behind standard door entry panels.



## SPECIFICATIONS

**Electrical**

Supply Voltage:	9Vdc to 24Vdc
Current Requirement:	< 100 mA

**Physical**

Dimensions (mm):	55 x 55 x 16 (H x W x D)
Material:	ABS Plastic
Rating:	IP66 - suitable for outdoor and indoor use
Mounting:	Mounting hole centres 48mm, fits standard door entry panels

**Environmental**

Operating Temperature:	-30°C to 50°C Ambient
------------------------	-----------------------

**Data Output**

Wiegand:	26-bit or 44-bit Wiegand (selectable) for use with a wide range of tokens/cards and controllers
PAC:	PAC compatible serial data for use with old and new PAC tokens/cards and controllers
	Other data outputs available on request.

**Connection**

Pigtail Cable Length:	0.5m
Cable Gauge:	7/0.2, 0.22mm stranded
Conductors:	8 core screened

**Operational**

Reading Range:	Up to 80mm depending upon the type of token or card
Buzzer Operation:	Controlled by host controller (active low)
LED Operation:	One tri-colour LED normally Red -blinks when token or card is read. Changes to Green when signal received from host controller on the LED line (active low)

# DP2200/P PANEL MOUNT DualPROX® PROXIMITY READER

## Connection Details

<b>RED</b>	+V
<b>Black</b>	0V
<b>White</b>	Data 1
<b>Green</b>	Data 0
<b>Blue</b>	PAC Data Signal
<b>Yellow</b>	LED
<b>Orange</b>	Select Wiegand 26-bit (to 0v) or 44-bit (to +V)
<b>Brown</b>	Buzzer

## Alternative Products

<b>DP2200/SL</b>	Slimline <i>DualPROX®</i> reader
<b>DP2200/V</b>	Vandal resistant <i>DualPROX®</i> reader

## Ordering Information

<b>DP2200/P</b>	Panel mounted <i>DualPROX®</i> reader
<b>DP-Card-n</b>	<i>DualPROX®</i> card with standard Nortech logo
<b>DP-Card-c</b>	<i>DualPROX®</i> card with custom logo
<b>DP-Card-b</b>	<i>DualPROX®</i> card blank
<b>DP-Fob-n</b>	<i>DualPROX®</i> Key fob standard Nortech logo
<b>DP-Fob-c</b>	<i>DualPROX®</i> Key fob with custom logo

Please contact BC Technology Sales or Sales Support departments for placing orders or further information

**Tel: 01933 405050    Fax: 01933 405454    Email: [sales@bctechnologyltd.co.uk](mailto:sales@bctechnologyltd.co.uk)**